



AUG '18 SEP '18 OCT '18

THE SANGAREE SOURCE

Published By: Sangaree Special Tax District

Administrative Office
102 Sangaree Park Court, Ste. 1
Summerville, SC 29486

Mailing Address
347 Sangaree Parkway
Summerville, SC 29486

843 - 871 - 9720

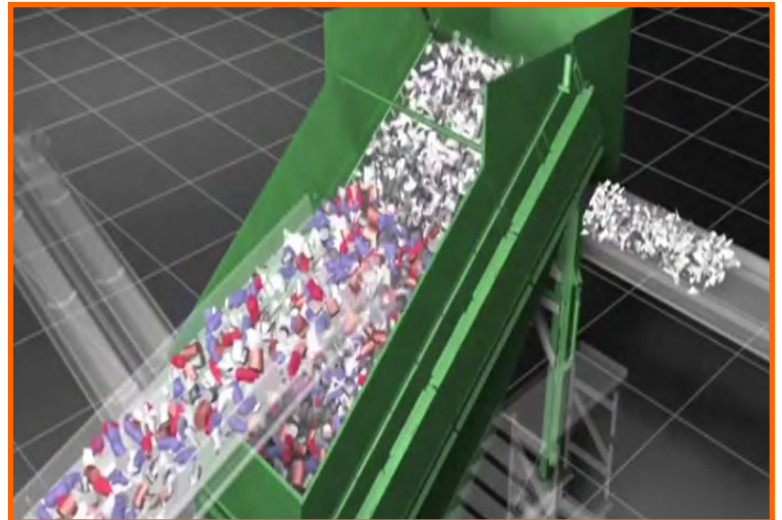
IMPORTANT NOTICE REGARDING COMMUNITY DAY SCHEDULED FOR SATURDAY, AUGUST 4

Due to the ongoing rainfall, the field used for Community day is saturated and more rain is anticipated prior to the event. The event is being rescheduled. The new date has yet to be determined. Updates will be posted on Social Media and on signs around the community. Thank you for your understanding.

Thank You Residents of Sangaree!

As most of you know, the Sangaree Special Tax District was requested by Waste Pro to end the recycle agreement. Sangaree and Berkeley County would like to thank the residents for their support during this unexpected transition.

As announced in the last newsletter, Berkeley County had just completed a Ground Breaking ceremony for the new recycling facility. The new facility will increase community recycling and create approximately 60 new jobs.



For more information about the new Recycling and Recovery facility, please visit the Repower South homepage <http://www.repowersouth.com/> and click on the video.

Berkeley County Convenience Centers still collect paper and flattened cardboard at their facilities. 606 Oakley Road is the closest off Highway 52.

Go On-line.....

The Sangaree Source is published electronically. Please call if you prefer a hard copy of the news letter. Office hours are 8:00 am to 4:00 pm. Call 843-871-9720. Please share the e-version with your neighbors:

<http://berkeleycountysc.gov/drupal/sangaree>
and select *Sangaree Source News Letter*




Inside this issue...

Sangaree Community News Info	1
Around Sangaree	2-3
Services	4-7
Sangaree FYI	8-9
The End	10-12

Around Sangaree

Sangaree Special Tax District Quarterly Public Meetings

The Sangaree Special Tax District Quarterly Public Meeting Schedule has been set. All meetings will take place in the Meeting Room of the Sangaree Library located at 595 Sangaree Parkway, Summerville. Please come to the meeting and find out more about your community and share **your** concerns. For additional information, please call the Sangaree Special Tax District office at 843-871-9720 or stop in. Office Hours are Monday thru Friday, 8:00am to 4:00pm.

- Tuesday, **February 6**, 2018 at 7:00 pm
- Tuesday, **May 1**, 2018 at 7:00 pm
- Tuesday, **August 7**, 2018 at 7:00 pm 
- Tuesday, **November 6**, 2018 at 7:00 pm

For more information, please visit the web page:
<http://sangareesubdivision.com/public-meeting-calendar>



SSTD Crime Watch Meeting - Crime Prevention is a Community Commitment

YOUR Community is **YOUR** responsibility. Keep our neighborhoods safe. <https://berkeleycountysc.gov/drupal/sheriff/watch>



The Sangaree Community Crime Watch Group will meet on **Thursday, August 9, Tuesday, September 11, and Wednesday, October 10 at 7:00pm** at the Sangaree Library. For more information, involvement opportunities, Crime Watch updates, and future meetings, check out the SSTD Crime Watch Facebook page or contact Crime Watch Coordinator Darrell Moser at (843) 851-5590 or oserdkb7qvg@hotmail.com

Thank you to the Residents of Sangaree

Many of you have gone out of your way to stop in the office or stop when you see the crew at work and express your thankfulness for all they do in all kinds of weather or work conditions.

Your kindness is always appreciated and shared with the crew members. Thank you for taking the time to do so!

- Brian
- John
- Ricky
- Tim
- Jamelle
- Laura
- Kelli
- Travis
- Steve
- Derek

Code Enforcement Follow-up

Representatives from the Berkeley County Code Enforcement office recently contacted the SSTD Office to express appreciation to the residents of Tabby Creek and the 95% compliance from residents after the recent Code Enforcement Sweep in June. Residents have been working hard to improve the appearance of their properties and belongings.

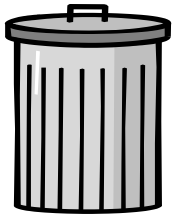


Sangaree - It's Time to Get Fit!

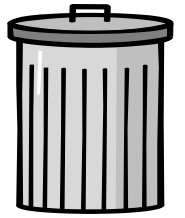
The New Sangaree Community Fitness Park is complete and ready for use! The Sangaree Crew have secured all the equipment, installed instruction panels with directions on the use of the various pieces, and laid down surfacing material for the area. The Fitness Park is located off Pierre Court.

Get ready to get fit !!!





Talking Trash

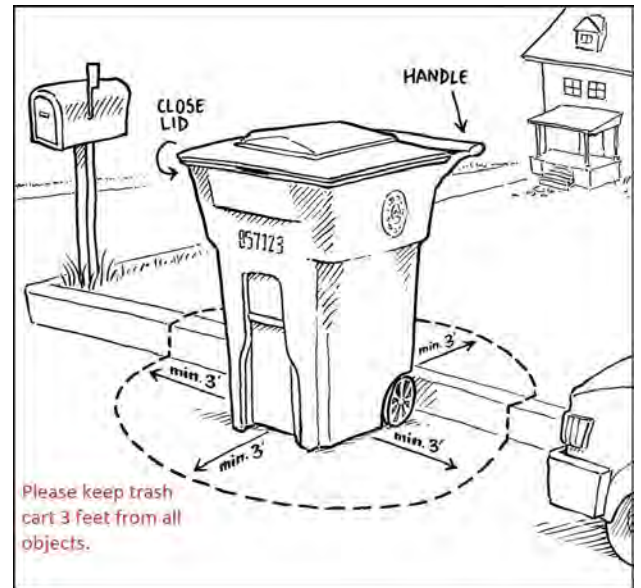


TRASH COLLECTION BEGINS AT 7:00 AM EACH COLLECTION DAY.
ANYTHING PLACED AT THE CURB AFTER 7:00 AM
MAY NOT BE COLLECTED.

HOME WASTE COLLECTION

Carts must be placed curbside before 7:00 am on your collection day. Your garbage may be collected anytime between 7:00 am and 7:00 pm. **Carts must be placed curbside, wheels facing your home, 3 feet from all obstructions** (such as parked cars, mailboxes, fire hydrants, utility boxes, additional carts, etc.). Report **ANY** problems with carts to Sangaree Special Tax District at 843-871-9720. Report Missed service **no-later-than 10:30 am** the next business day.

The roll carts (trash can on wheels) are the property of the service contractor and must remain at the house when residents move.



LARGE APPLIANCES & BULK ITEMS

Items should be placed curbside by 7:00am Monday mornings. Washers, dryers, water heaters, refrigerators, grills, bicycles, lawnmowers and any other metal item larger than 9" x 48". **Refrigerator and/or freezer doors must be removed. ITEMS MUST BE EMPTY.**

HOME ELECTRONICS (E-WASTE)

Items should be placed curbside by 7:00am Monday mornings. Items such as TVs, other home entertainment components, computers, monitors, printers and scanners, etc. are included in this type of pick up.



PROPER DISPOSAL OF PAINT CANS



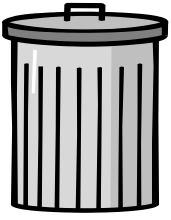
Berkeley County does **not** have a paint recycling program. We recommend that unused paint be donated. For disposal, paint must be hardened using a substance such as kitty litter or mortar mix before disposing into the regular trash. All paint must be completely dry. Once completely dry, it may be placed in the household waste roll cart. The landfill cannot accept any liquids.

DO YOU STILL HAVE A WASTE-PRO ROLL CART?

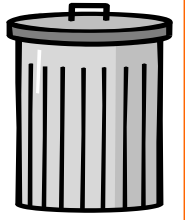
If any residence is still in possession of a Waste Pro Roll cart formerly used for recycle service, please call the office, (843-871-9720) leave your name, address, and phone number. The office staff will arrange to have the cart removed. The WastePro carts are the property of the WastePro company and need to be returned.



Remember! Recycling services will return to Sangaree in 2019!



Talking Trash



HOUSEHOLD WASTE & RECYCLE ARE SCHEDULED TO BE PICKED UP BETWEEN THE HOURS OF 7:00AM & 7:00PM. TO REPORT MISSED SERVICE PLEASE CALL THE SSTO OFFICE NO LATER THAN 11:00AM THE NEXT BUSINESS DAY.

CONSTRUCTION DEBRIS

REMOVAL OF CONSTRUCTION DEBRIS IS NOT A PROVIDED SERVICE. IT IS THE RESPONSIBILITY OF THE HOMEOWNER OR CONTRACTOR.

TREE REMOVAL

SANGAREE WILL REMOVE ALL LIMBS, BRANCHES, AND TRUNKS UP TO FOUR INCHES IN DIAMETER. ANYTHING LARGER THAN FOUR INCHES IS THE RESPONSIBILITY OF THE CONTRACTOR OR HOMEOWNER.

Keep the following three types of yard waste separate from each other and from other types of solid waste as they are collected separately.

YARD WASTE: Yard waste includes plant material removed from yard, NOT lawn furniture, fixtures, or decorations which are collected with furniture; no bricks, concrete edging or stones/rocks.

LOOSE YARD WASTE: Grass clippings, leaves, pine needles, pine cones, and trimmings from plants. Bagged in biodegradable **PAPER** bags (**NOT PLASTIC**) or placed in a container, such as a trash can, clearly marked "yard waste". Regulations prohibit the use of the same container for household trash and yard waste. Contained loose yard waste cannot exceed **65 pounds each**. Containers without lids must allow for drainage of rain water. **Bagged dirt will NOT be collected.**

LIMBS: Trunks and branches **not exceeding four inches in diameter** will be collected. Limbs are collected and chipped into a truck. Cut out forks, stack in an orderly pile not exceeding 4' high, with the cut ends towards the street. This allows for curbside collection as employees are not allowed to enter private property. Large quantities of limbs may be stacked in multiple, smaller piles or a continuous row.

ROUTE 'A' SUBDIVISIONS

Hampton Trace Indian Woods Village Victoria Place Spring Lake Village Stratford Downs

Monday - Household Garbage in roll carts. Home Electronics (E-Waste), Appliances and other Metal, and Large Yard Waste (limbs, branches, and trunks not exceeding 4 inches in diameter)

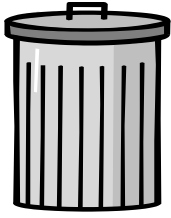
Wednesday - Furniture, Loose Yard Waste (grass clippings, leaves, pine straw, fine prunings) contained in paper bags or cans labeled yard waste

ROUTE 'B' SUBDIVISIONS

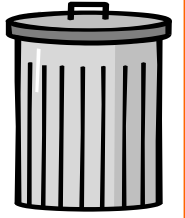
**Carriage Crossing Cobblestone Ridge Lyon's Cove The Cove Highland Village Prestwick
Partridge Creek Pebble Creek Tabby Creek Sangaree Gardens Woodbridge Village
Traders Station Cobblestone Ridge Townhomes Raintree Village Green**

Tuesday - Household Garbage in roll carts. Home Electronics (E-Waste), Appliances and other Metal, and Large Yard Waste (limbs, branches, and trunks not exceeding 4 inches in diameter)

Wednesday - Furniture, Loose Yard Waste (grass clippings, leaves, pine straw, fine prunings) contained in paper bags or cans labeled yard waste



Sangaree Service Information



NOT INCLUDED IN COLLECTION SERVICE

Hazardous materials such as paint, antifreeze, used motor oil, used oil filters, etc., are not included in the collection service. For further information on disposal locations and proper disposal guidelines, contact the Landfill at 843-572-4400.

Homeowner Contracted Service Companies hired by individual homeowners for home improvements, tree removal, landscaping, or other indoor/outdoor improvements are responsible for the removal of the unwanted debris and materials.

Construction & Demolition materials (C&D) from home building and remodeling projects (including carpet and padding), landscape timbers, pool liners and pallets will not be picked up. It is the responsibility of the home owner to arrange for proper disposal of these types of items.

The resident is responsible for proper disposal of any item not included in the collection service.

Berkeley County Litter Control can enforce clean-up of improperly placed solid waste materials. Residential solid waste collection service is not intended for Sangaree Parkway, Berkeley Drive or any green area. Curbside collection service is limited to residential streets.

FLOURESCENT BULBS

All fluorescent light bulbs contain mercury, which is toxic. They are safe to use and do not release mercury while intact. When broken however, these bulbs may release mercury into the air, water and soil posing a significant risk to human health and the environment. Compact Fluorescent Light (CFLs) are the squiggly-shaped bulb and are used by most residents.

Residents can take advantage of the recycling program for CFLs at Home Depot. Home Depot will accept any **unbroken** CFL bulbs at the refund desk.

The tube-type bulb is a little trickier. Berkeley County Water and Sanitation says you can take them to the convenience center if there is less than 5 tubes and you will be directed to put them in the small appliance container. If, they are broken sweep up the waste and place it in your trash.



For more information call the Berkeley County Water and Sanitation at (843) 572-4400 or South Carolina DHEC's Office of Solid Waste Reduction and Recycling at www.scdhec.gov/recycle or 1-800-768-7348

**There are no passengers on Spaceship Earth.
We are ALL crew.**

-Marshall McLuhan



Berkeley County Library System - Sangaree Branch - Hours of Operation
Monday thru Thursday ~ 10:00am - 6:00pm & Friday and Saturday ~ 9:00am -

National Voter Registration Day

Have you recently moved or never registered to vote?

Ensure your ability to vote in the national election by signing up at your library! Staff will be on hand to assist with electronic sign up or signing up by mail.

Free stickers will be provided to those who register while supplies last.



LEGO DAY
SATURDAY, JULY 28
10:00-12:00 Noon



For information on these and other Berkeley County Library programs, please stop by your Sangaree Branch. For more on Programs for all ages go to:
<http://berkeleylibrarysc.org/calendar>

Story Time is 10:30 am every Monday.
Come join us!!

Come join us for a Matinee & a Craft!
Peter Rabbit
Thursday, Aug 16 @ 2:00pm Call to register



ADULT COLORING

Each Tuesday from 1:00 - 3:00
Join coloring enthusiasts for a relaxing couple of hours coloring and chatting.
Bring your coloring book or color with materials provided by the library.



Writer's Nest

A safe haven for writer's of all skill levels and disciplines to share their work and practice their craft. Stop by on the third Saturday of the month at 10:00am and bring your creativity!



UPCOMING LIBRARY CLOSURES

Saturday & Monday, September 1 & 3 - Labor Day Weekend
Wednesday, October 17 - Library Staff Development
Saturday & Monday, November 10 & 12 - Veteran's Day Observance
Thursday thru Saturday, November 22 - 24 - Thanksgiving

The whole world opened to me when I learned to read

-Mary McLeod Bethune

Check out these and other Library events around the Berkeley Library System:

You can find out more about, events, activities, e-books, movie streaming and other opportunities by going to <https://berkeleylibrarysc.libcal.com/> **Come, check us out! It's FREE!!**

What are the responsibilities of the SSTD in Sangaree?

Residents of Sangaree Special Tax District receive public services and/or improvements, which could not otherwise conveniently or equitably be provided by Berkeley County. Some of the services we receive in Sangaree include, but are not limited to:



- 1) **Waste Management Service** - Residents have solid waste collected weekly that include household waste, recyclables, furniture, appliances, yard waste, and tree limbs.
- 2) **Recreation** – Residents enjoy annual Community Events along with One park: Spring Lake; Four playgrounds: Cambridge, Raintree, Pierre, & Lyons Cove; 44 green spaces; One **NEW** Fitness Park; ALL maintained by Sangaree
- 3) **Fire Protection** – C & B Fire Department Sangaree Station and Pine Ridge Fire Department
- 4) **Maintenance**— Landscaper, General Maintenance crew, and an Administrative Staff work for Sangaree. Additional services are provided by the use of contracts with private companies approved by Berkeley County Council.

Some of you may wonder what are the areas maintained by the SSTD Crew? There are parks, playgrounds, and green spaces within Sangaree. The Sangaree crew is responsible for those properties.

The Sangaree crew is not responsible for private property or the easement afforded property owners for access by utility or service workers. Please stop by the SSTD Administrative Office if you would like to read the complete document of State of South Carolina, County of Berkeley Restrictive Covenants.

For more information contact your Sangaree Advisory Board:

CHAIRMAN ANN BIRCH	ACBIRCH01@yahoo.com
VICE-CHAIRMAN RAE ANNE LEIMBACH	RAEANNELEIMBACH@gmail.com
SECRETARY JEANNIE BEARD	JEANNIEB@sc.rr.com
COMMISSIONER DALE CHISLER	THREEHILLBILLYS@yahoo.com
COMMISSIONER HAROLD GREEN	haroldgreen44.hg@gmail.com
COMMISSIONER ERNIE VARNER	ERNIE_VARNER@yahoo.com

A list of Sangaree covenants can be found at:

<https://drive.google.com/drive/folders/0B1mxJPUAgRRRR09EcUJ3MnU2YU0>

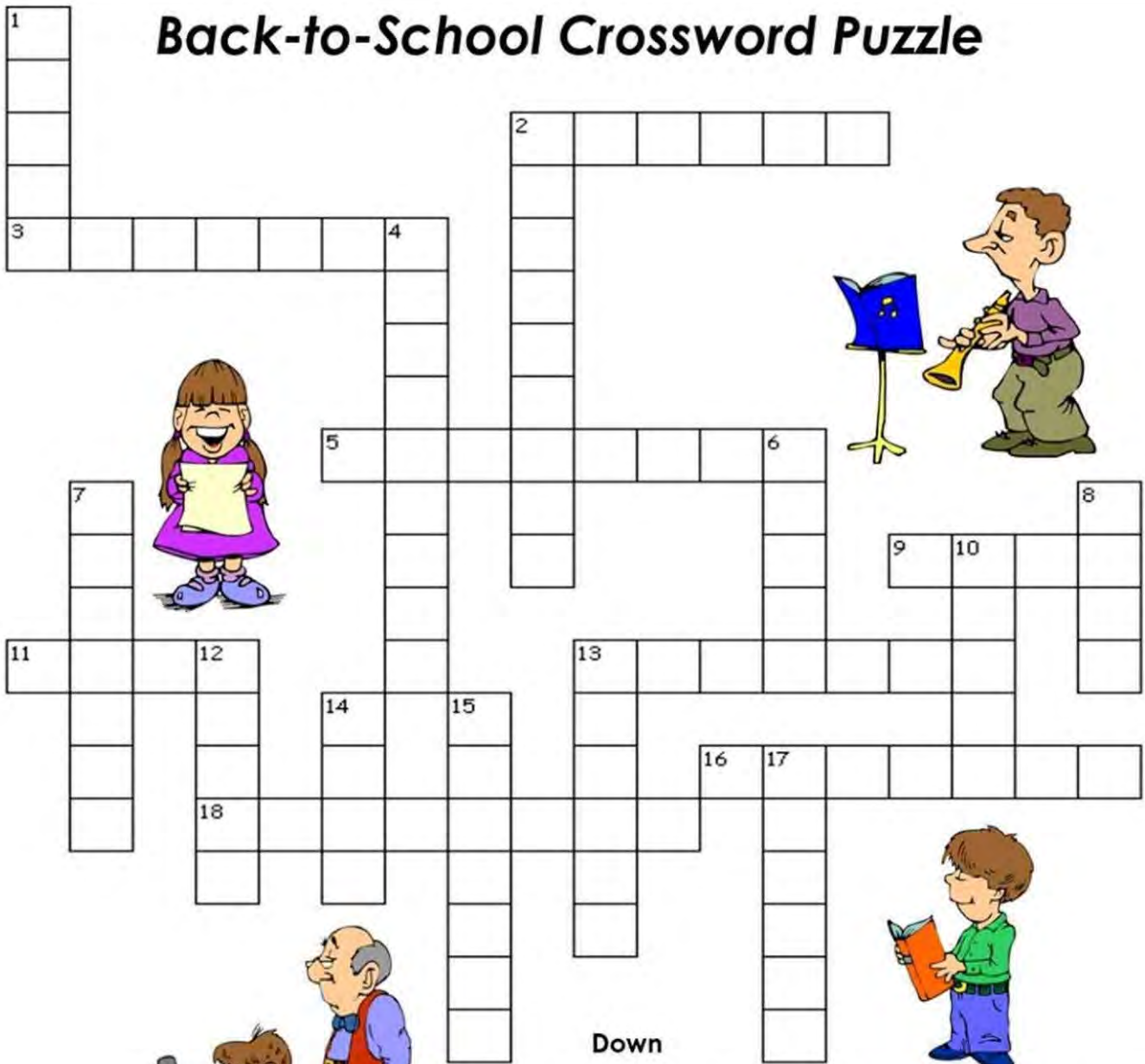
Streets of Sangaree



U B C M A C G R E G O R P K Q K Y N O P
 P A L O N G L E A F H R R K I R E N Y T
 V I L L A G E G R E E N I M C R V M R L
 R T E L E B H A T I B C S C O G K A L R
 A R U S T S E U Q E R I E V B E T S Y A
 D A S A N G A R E E E X V W B W L T O I
 E D S T R I T E S T V E H Y L W H O Q N
 N E V B T T H Y E B A Q K Y E A A R X I
 B R O W N E E E T A R U S K S N Z D C T
 U S J Q G N R G T C D E N C T I N N E O
 F T N O M T J O E V Q S C L O R U E T H
 L A G M S I L F E T A T R F N F T Y W P
 Y T A G A E O A P J D R A G E R U A E B
 U I N F C U P N E V O I N A T E S S E P
 K O A R R O W H E A D A E T E R Z A D D
 L N B U C K S K I N E N I P R A G U S Y

BETSY	EQUESTRIAN	BEAUREGARD	BROWN
QUEST	VILLAGEGREEN	LONGSTREET	BREVARD
HEATHER	ARROWHEAD	TYNER	MACGREGOR
TWEED	PHOTINIA	COBBLESTONE	IVY
ASTOR	SUGARPINE	LONGLEAF	WADE
TEEPEE	JOSEPH	SANGAREE	PONY
KIRK	TRADER STATION	BUCKSKIN	CRANE

Back-to-School Crossword Puzzle



Across

2. tool for writing
3. tools for coloring
5. device for connecting to the Internet
9. used to stick papers together
11. another word for quiz
13. to put a point on a pencil
16. person who plans lessons and helps you learn
18. book with blank pages for writing

Down

1. subject in which you learn about songs and instruments
2. person in charge of a school
4. yellow vehicle that brings kids to school
6. measuring tool
7. people you like being around
8. look at words and understand them
10. afternoon meal
12. what you do with your brain
13. place where students learn
14. subject in which you learn about numbers
15. place where books are kept
17. pink item that helps remove mistakes



Presorted Standard
US Postage Paid
Permit No. 1057
Charleston, SC

SANGAREE

SPECIAL TAX DISTRICT

102 Sangaree Park Ct.
Suite 1
Summerville, SC 29486

THE SANGAREE SOURCE
AUGUST 2018



DID YOU KNOW?

School starts Monday, August 20.

The SSTD Offices will be closed Monday, Sep 3 in observance of Labor Day

Remember: It's hurricane season!!

<https://www.scecmd.org/stay-informed/publications/hurricane-guide/>

Have you practiced your family disaster plan?

Be Prepared! Nature is unpredictable!!

SCHEDULED SERVICE DELAYS WILL BE POSTED AROUND SANGAREE SUBDIVISIONS. UNEXPECTED CHANGES WILL BE MADE UP AS SOON AS POSSIBLE.

